

GAOMEI + WUQI FISHING PORT TRIP

大信詩帆 長田彩 林安 黎慶祥 司品蓁 葉于禎



GAOMEI WETLANDS



Geography and Environment



- **Location:** Gaomei Wetlands is situated along the coastline in central Taiwan, where the Dajia River meets the Taiwan Strait.
- **Area:** The wetlands cover an area of approximately 300 hectares.
- **Our choice of transport:** Bus No.309 (25 mins)

Renewable Energy!



- The wind turbines are part of Taiwan's initiative to increase its share of renewable energy, reduce reliance on fossil fuels, and decrease carbon emissions.
- The location in Gaomei Wetlands is ideal for harnessing wind power due to the area's high wind speeds, which provide a consistent and sustainable energy source.
- The development of wind energy in this area supports local jobs and contributes to the economy by promoting green energy projects.

Key Attractions

Gaomei Lighthouse: Built in 1967, it serves as a guiding light for ships navigating the Taiwan Strait.

- Visitors can enjoy panoramic views of the wetlands and the coastline.

Gaomei Seawall Bikeway: A scenic bikeway offering stunning views of the wetlands and the sea.

- Popular for cycling, jogging, and photography.

Gaomei Wetlands Visitor Center: Provides educational exhibits about the local ecosystem and conservation efforts.

- Activities: Interactive displays, guided tours, and environmental education programs.





We support sustainable energy!



Boardwalk: A wooden boardwalk stretches through the wetlands, allowing visitors to walk out into the marshland and get close to the wildlife without disturbing the habitat.



Sunset Views: Gaomei Wetlands is famous for its breathtaking sunsets.

Biodiversity

Flora and Fauna

- **Plants:** The wetlands are home to unique salt-tolerant plants like sea purslane and glasswort.
- **Birds:** A haven for birdwatchers, with species such as the black-faced spoonbill, egrets, and herons.
- **Other Wildlife:** Crabs, mudskippers, and various fish species inhabit the wetlands.
- **Conservation Efforts:**
 - Efforts include habitat restoration, pollution control, and public education programs led by local and international organizations.





One clawed crabs!



Marine Life: The wetlands are rich in marine life, including various types of crabs, fish, and invertebrates.



Vegetation: The area is also known for its diverse plant species, including mangroves and other wetland-specific flora.

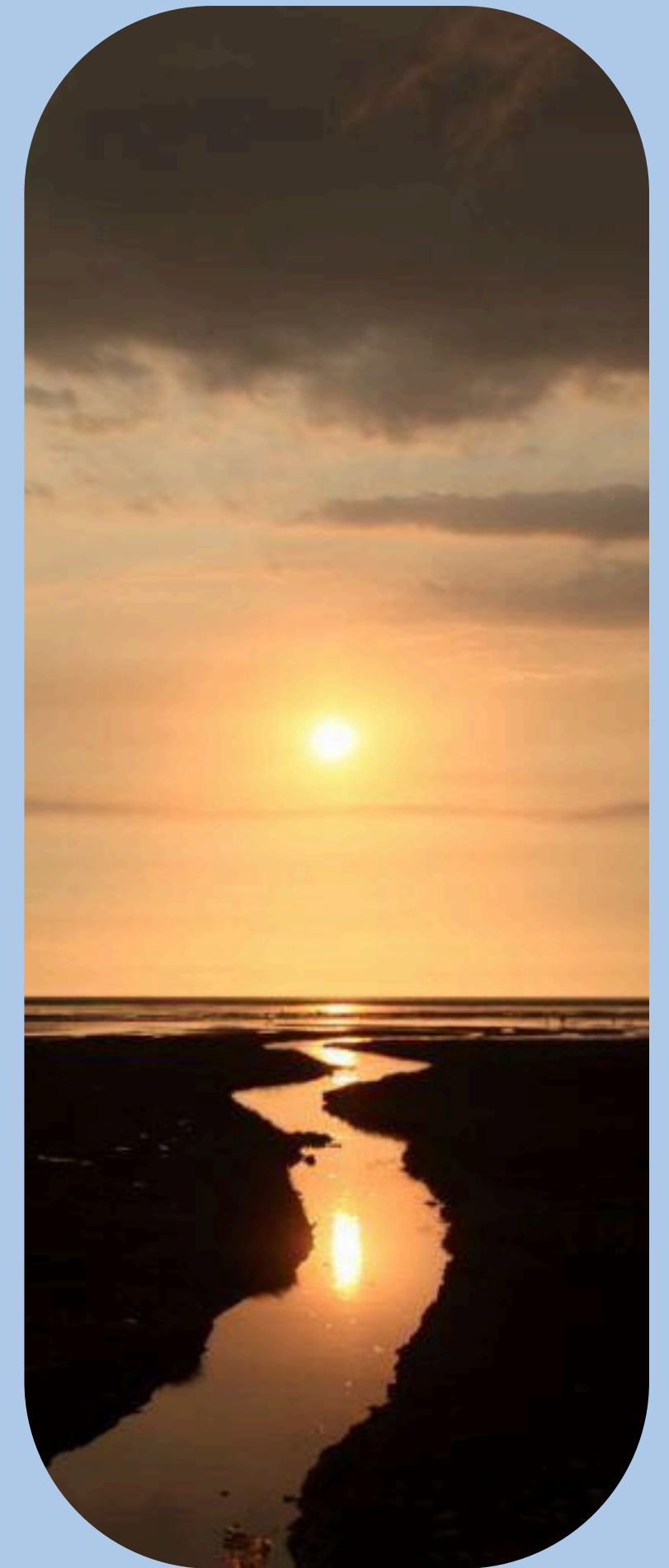
Environmental Significance

Ecosystem:

- Flood Control: Acts as a buffer zone, reducing the impact of storms and tidal surges.
- Water Purification: Filters pollutants from the water, improving water quality.
- Habitat: Provides a crucial habitat for numerous species, supporting biodiversity.

Challenges:

- Human Activities: Urbanization and pollution threaten the delicate balance of the ecosystem.
- Climate Change: Rising sea levels and changing weather patterns pose significant risks.



梧棲魚市

WUQI FISHING HARBOUR





How to get there

We used 309 bus from PU University. It took about 40 minutes.

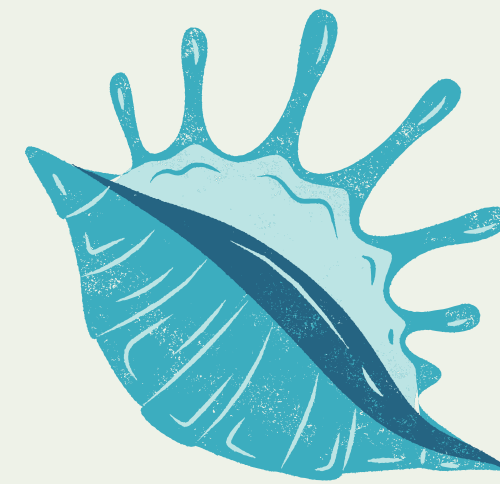
But since there are so big car parking areas, most of people used own cars.

It's took only 10 minutes from Gaomei to here



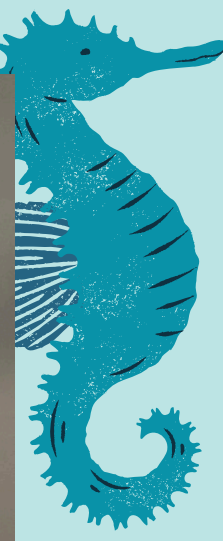


FOOD AND DRINK STALLS



Fried seafood, pastry and dried fish are sold there.
There are also several beverage shops.





FISH MARKET

We can eat all kinds of fresh seafood

- Fish...salmon, tuna
- Shell...oysters, scallops
- Crustaceans...shrimp, crab
- Mollusks...octopus, squid,



FRESH SEAFOOD

We can eat fresh fish caught in the nearby sea.
we can ask restaurant to cook the fish we bought there.



FISHING PORT

Especially on holidays, many people visit fishing ports for fresh fish.

Visitors to Gaomei also visit there because it is accessible on foot from Gaomei.



VARIETY OF PHOTO SPOTS

There are various photo spots. We can enjoy taking pictures!!!
With this approach, there are many family on holidays.



Reflection



People, Place and World



Division of labor:

Videography: 葉于禎 and 司品蓁

Powerpoint: 長田彩, 大信詩帆, 黎慶祥, and 林安